

DYMAX WORK TOOLS

RAIL RIDER II FOR EXCAVATORS

OVERVIEW

The Dymax Rail Rider II high rail system introduces ultimate flexibility to high rail fleet management. Don't spend hundreds of thousands of dollars extensively modifying multiple machines. Utilize the existing machines already in your fleet. Never limit your high rail choices to only those machines with dedicated hi-rail gear installed. With the Dymax Rail Rider II, hi-rail any excavator. Want to switch brands? Do so without spending more money on new conversions. The Dymax Rail Rider II is the smarter, more efficient way to high rail excavator machines.



The heart of **The Dymax RailRider II** high rail system is the Power Car and the Machine Car. The Power Car features a Cummins engine with 240 horsepower.

The engine is controlled by a portable remote control device, enabling the operator to control the entire machine from the cab.

SPECIFICATIONS

OVERALL LENGTH 128 in/ 3.25m

OVERALL WIDTH 100 in / 2.54m

OVERALL HEIGHT OFF-RAIL 76.0 in/ 1.94m

TOTAL WEIGHT W/ FLUIDS 9,000 lbs / 4083 kg

ENGINE 240 Horsepower, tier 3 Cummins

MAXIMUM SPEED 20mph/ 40kmh (Grade will affect speed)

FUEL TANK CAPACITY 50 GALLONS

HYDRAULIC TANK CAPACITY 100 GALLONS

- **16 in /406mm wheels**
- **Axles - 2in /50mm with pillow block bearings**
- **Auxiliary Power – Gear pump for hand tools**
(with 15GPM and 2,000psi circuit; adjustable for different settings)



The walkway surrounding the Power Car has a slip resistant surface, to allow for a safer work area.

Positioning chains on all four corners of the Power Car aid in making all on/off rail actions easier and faster.

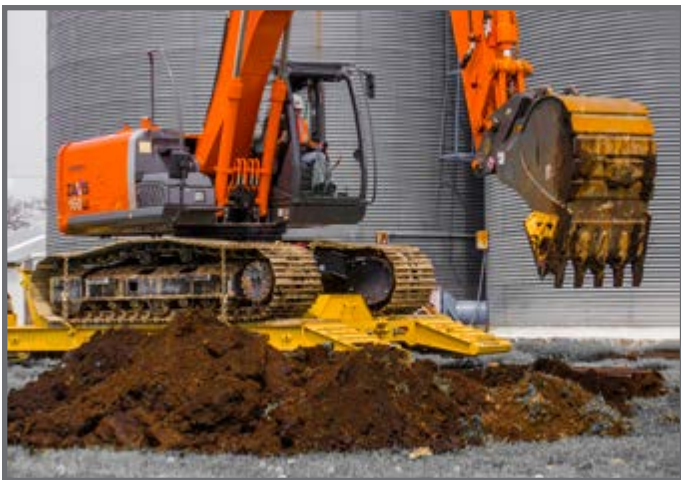
A safety beacon, fire extinguisher, and work lights are standard on the RailRider II, as well as brake and tail lights, weights stenciled on the side, and a first aid kit.



Dymax Rail Rider II Machine Cars are matched to the given excavator class for hauling capacity and lifting requirements. Machine Cars are available in end load designs. The end load design keeps the machine as close to within W6A load gauge as possible.

All Machine Cars are fitted with air brakes, 16" diameter rail wheels, and multi-plate coupling quick disconnects, as well as LED trailer lighting, failsafe air braking, and remote downrigger stabilization.

All Machine Cars are provided with lifting chains and anti-slip deck surface coating.



SPECIFICATIONS

End Load Machine Car - Hydraulic Excavator - 16 & 20 ton

OVERALL LENGTH 260 in / 6.60m

OVERALL WIDTH 102in / 2.59m

OVERALL HEIGHT OFF-RAIL 21 in / 533 mm

OVERALL WEIGHT 12,000 lb / 5,443 kg

MAX GVWR CAPACITY 55,000 lb / 24,950 kg

DRIVE MOTOR SYSTEMS Two Drive Axles, 350cc motor size

MAX DRIVE SPEED 20mph on 0-1% grades

MAX LOAD ON 0-1.5% GRADE 150,000 lbs / 68,000 kg

End Load Machine Car - Hydraulic Excavator - 29 ton

OVERALL LENGTH 290IN / 7.34M

OVERALL WIDTH 102in / 2.59m *on rail width 126 in / 3.2m)

OVERALL HEIGHT OFF-RAIL 24in / 610mm

OVERALL WEIGHT 17,850 lb / 8,097 kg

MAX GVWR CAPACITY 72,000 lb / 32,660 kg

DRIVE MOTOR SYSTEMS Two Drive Axles, 420cc motor size

MAX DRIVE SPEED 17mph on 0-1% grades

MAX LOAD ON 0-1.5% GRADE 170,000 lbs / 77,100 kg

End Load Machine Car - Hydraulic Excavator - 36 ton

OVERALL LENGTH 336IN / 8.53M

OVERALL WIDTH 118in / 2.99m *on rail width 144 in / 3.66m)

OVERALL HEIGHT OFF-RAIL 26in / 660mm

OVERALL WEIGHT 22,500 lb / 10,206 kg

MAX GVWR CAPACITY 90,000 lb / 40,824 kg

DRIVE MOTOR SYSTEMS Two Drive Axles, 420cc motor size

MAX DRIVE SPEED 17mph on 0-1% grades

MAX LOAD ON 0-1.5% GRADE 170,000 lbs / 77,100 kg